

Descendants of William Bartlett

Generation No. 1

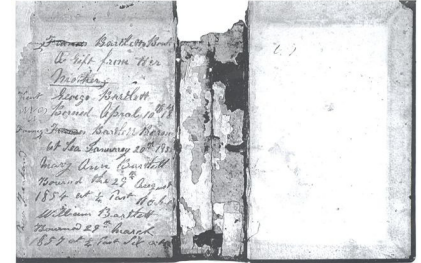
1. WILLIAM¹ BARTLETT¹ was born 1770 in Gillingham, Kent, England¹, and died 07 Jun 1846 in Gillingham, Kent, England². He married CATHERINE MCPHERSON³ 21 May 1809 in Kent, England⁴, daughter of WILLIAM MCPHERSON and MARY MALLANDER. She was born 14 Dec 1777 in Rochester, Kent, England⁵, and died 21 Dec 1873 in Rochester, Kent, England^{6,7}.

Notes for WILLIAM BARTLETT:

Williams death certificate states he was a "Gentleman".

More About WILLIAM BARTLETT:

Census: 1841, Married, head, an Agricultural labourer, aged 71, living Church St, Gillingham, Kent.⁸



More About CATHERINE MCPHERSON:

Census 1: 1841, Living in Church St, Gillingham with second Husband William, daughter Mary and Elizabeth Palmer aged 2.⁸

Census 2: 1851, Living At 89/90 Church St, Gillingham Kent with son George and daughter in law Frances and Grandson George Henry⁹

Census 3: 1861, Living with James Oram and family, aged 83, at 4 Tranquil Place, St Margarets Road, Rochester, Kent.¹⁰

Census 4: 1871, Living At 57 St Margarets Road, Rochester, Kent, aged 93. Living with her daughter Susanna Oram and Grandchildren.¹¹

More About WILLIAM BARTLETT and CATHERINE MCPHERSON:

Marriage: 21 May 1809, Kent, England¹²

Children of WILLIAM BARTLETT and CATHERINE MCPHERSON are:

2. i. GEORGE² BARTLETT, b. Dec 1811, Sittingbourne, Kent, England; d. 10 Dec 1860, Onehunga, Auckland, New Zealand.
3. ii. MARY ANN BARTLETT, b. 15 Jan 1826, Sittingbourne, Kent, England; d. Aug 1891, St Olave, London, England.



Generation No. 2

2. GEORGE² BARTLETT (WILLIAM¹)¹³ was born Dec 1811 in Sittingbourne, Kent, England¹³, and died 10 Dec 1860 in Onehunga, Auckland, New Zealand¹⁴. He married FRANCES LAWRENCE^{15,16} 1847 in Staffordshire, England, daughter of WILLIAM LAWRENCE and JANE MORTON. She was born 1817 in Wheaton Aston, Shropshire, England¹⁶, and died 08 Aug 1891 in Onehunga, Auckland, New Zealand¹⁷.

Notes for GEORGE BARTLETT:

George joined the Royal Marines at age 16 as a labourer, possibly giving a false age as some of his records so far do not tally with his birth date of about 1811. He transferred to the Royal Marine Artillery Service on 20th June 1830, commissioned at Chatham, England, where he became a Sergeant. He was in receipt of a Chelsea Pension from the Royal Greenwich Hospital due to injuries received and poor health while in service. He was admitted to Greenwich Hospital on 21st December 1837.

It is known George served in Syria, China and Gibraltar. In 1840-42 aboard the Cornwallis he received the China medal.

Later during the same years, aboard the Vanguard, he received the General Service Medal for duty in China and Syria.

His description was given as 5ft. 9 inches with sandy hair, blue eyes and a fair complexion, with a quiet nature.

A George Bartlett appears in the 1841 census, aged 30, a coast guard in Worth England, married to Hannah and with two children, Eliza and Sarah. I cannot prove this is our George but if he is it would show he had married twice.

He died of inflammation of the lungs in Onehunga, the informant at his death being his nephew William Busbridge living in Onehunga, Auckland, New Zealand.

George arrived in New Zealand in 1852 aboard the "Inchinnan," with his wife Frances and young son George and baby daughter Fanny, who was born aboard ship on the way to New Zealand.

In 1857, 1858, 1859 and 1860 George appears on the Auckland Jury Lists. (New Zealand Gazette)

In 1863 Frances made a pension claim on behalf of her deceased Husband. (New Zealand Gazette)

George appears in the books "The Royal NZ Fencibles 1847-1852" and also "Early Settlers".

More About GEORGE BARTLETT:

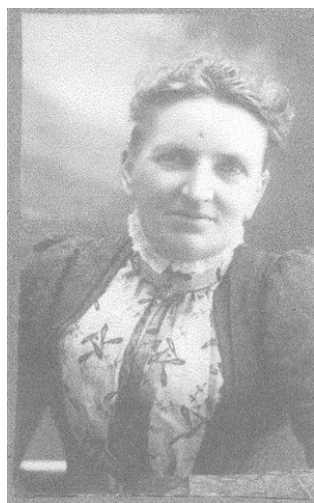
Burial: 12 Dec 1860, St Peters Church, Onehunga, Auckland.¹⁸

Census: 1851, Living 89/90 Church Street, Gillingham, Kent with his Mother Catherine, Wife Frances and baby Son George¹⁹

Christening: 03 Nov 1811, Sittingbourne, Kent, England. Batch no/s 103781-4 and source no. 147372120

New Zealand Gazette 1: 1863, A pension claim was made by Frances on behalf of her deceased Husband²¹

New Zealand Gazette 2: 1858, George was on the Auckland Jury List²¹



Notes for FRANCES LAWRENCE:

Frances made a claim for a Crown Grant in 1863 on behalf of her dead husband George and was granted land at Kariori (Raglan) 70 acres, and Forty Pounds on the 27th of October 1863. She died of paralysis and bed sores at age 74.

More About FRANCES LAWRENCE:

Baptism: 28 Dec 1822, Lapley, Staffordshire, England²²

Burial: 10 Aug 1891, St Peters Church, Onehunga, Auckland.²³

Census 1: 1841, Living with her Parents in Lapley, Staffordshire, aged 15 (18)²⁴

Census 2: 1851, Living with Her Mother in law at 89/90 Church St, Gillingham, Kent, a dressmaker aged 32²⁵

New Zealand Gazette: 1863, Frances applied for a Crown Grant of Land, page 76.²⁶

More About GEORGE BARTLETT and FRANCES LAWRENCE:

Marriage: 1847, Staffordshire, England

Children of GEORGE BARTLETT and FRANCES LAWRENCE are:

4. i. GEORGE HENRY³ BARTLETT, b. 10 Apr 1849, Gillingham, Kent, England; d. 03 Sep 1915, General Hospital, Auckland, New Zealand.
5. ii. FRANCES ELIZABETH BARTLETT, b. 21 Jan 1852, Aboard "Inchinnan" on way to New Zealand; d. 12 Apr 1934, Paterangi, Waikato, New Zealand.
6. iii. MARY ANN BARTLETT, b. 29 Aug 1854, Onehunga, Auckland, New Zealand; d. 12 Jan 1922, Albert St, Onehunga, Auckland, New Zealand.
- iv. WILLIAM BARTLETT, b. 29 Mar 1857, Onehunga, Auckland, New Zealand; d. 13 May 1875, Onehunga, Auckland, New Zealand.
7. v. CATHERINE JANE BARTLETT, b. 24 Oct 1860, Onehunga, Auckland, New Zealand; d. 11 Aug 1913, 2 Canada St, Auckland, New Zealand.